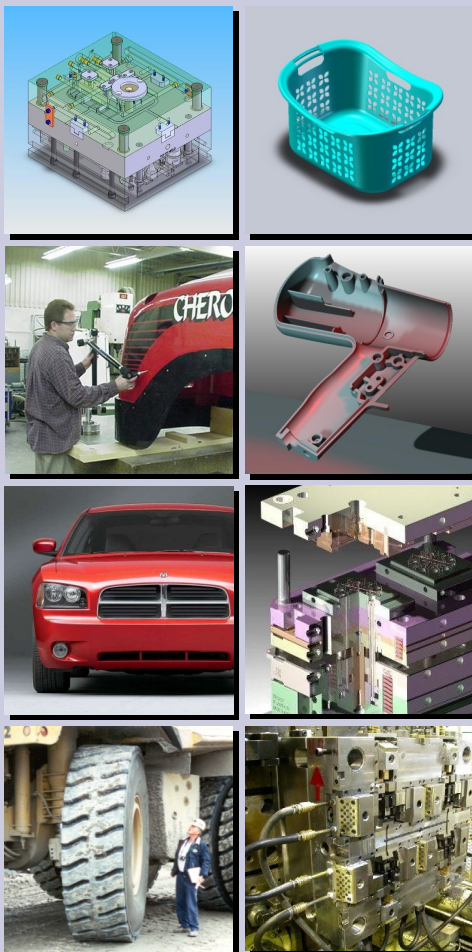


A Variety of Services for a Global Plastics Industry

Whether you need assistance with plastic product design, mold and fixture design, prototyping or manufacturing, of plastic parts, David Wolfe Design is equipped to help you compete in any area of today's highly competitive global economy.



Data Transfer Options:

- email
- secure FTP site
- CD/DVD
- 4mm DAT tape
- 3-1/4 Disk

We can send or receive data in the following formats:

- Cadkey
- SolidWorks
- Surfcam
- ProE (3D) - read only
- UGII (3D) - read only
- Catia (3D) - read only
- STEP
- IGES
- Parasolid (X_T)
- ACIS
- VDA
- Catia Graphics (CGR)
- DWG
- DXF
- STL

David Wolfe Design, Inc.

829 Moe Drive
Akron, Ohio 44310

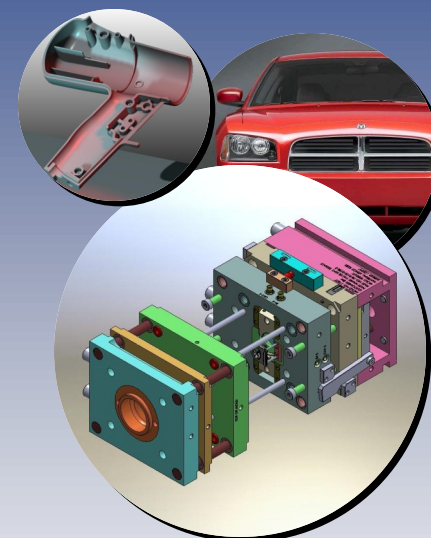
Phone: 330-633-6124
Fax: 330-633-9926
Email: info@davidwolfedesign.com



Reach us on your
smart phone



Design Services



**Plastic part design &
development, mold &
fixture design, reverse
engineering**

Serving the plastics industry since 1985!

829 Moe Drive Akron, Ohio 44310
PH: 330-633-6124 FX: 330-633-9926
Email: info@davidwolfedesign.com
Web: www.davidwolfedesign.com

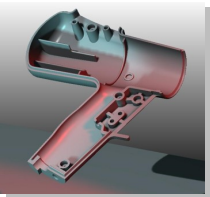
Design Services...

David Wolfe Design, Inc was started in 1985 as a sub-contract injection mold design firm. The plastics industry has changed dramatically since then and we have adapted our services accordingly. We now offer a wide range of design and support services to assist our customers in today's challenging business climate. With our broad range of exposure in the plastics industry, our designers are uniquely equipped to assist our customers with their design



Plastic part design & development

David Wolfe Design offers plastic product design and development services that help to bridge the gap between Industrial Design and Manufacturing. To properly take their ideas to manufacturing, the customer needs accurate CAD models, drawings, and a functional design. It is at this point that the years of tooling experience, state of the art design software, and our talented design department become a valuable asset. The result? A product that looks good, functions properly and is cost-effective to manufacture.



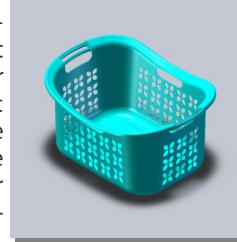
Reverse Engineering

Reverse Engineering is more than just taking measurements of existing parts and creating new data or drawings. It also involves capturing the design intent of the original part. Using different methods we can take an existing part and recreate the necessary geometry in a variety of data formats.

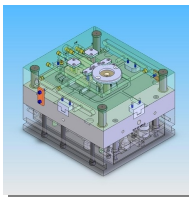


Feasibility Studies

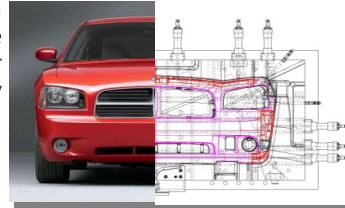
Tooling Feasibility Studies are most effective early in the design of a plastic part before designs have been submitted for approval, testing, or production. The first aspect of a study may be to review the part design for features that may require complicated mold actions and to offer suggestions on how to improve the design and reduce the mold cost.



Injection & Compression Mold Design

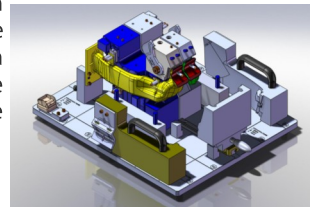


Injection & compression mold requirements and manufacturing methods are as varied today as they ever were. At David Wolfe Design, we strive to work as an extension of our customer's own engineering department and provide quality mold designs in the format that our customer's are used to working with whether it be 2-dimensional blueprints or a complete 3D solid model of the entire mold. While each design is unique, there are solutions we have seen over the years that we can apply to today's problems.



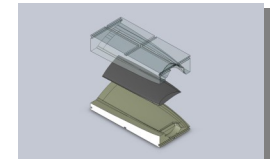
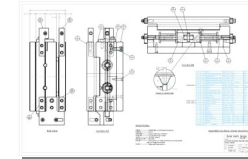
Fixture Design

Fixtures are used in a variety of applications, usually to hold a part in position while a secondary action or operation can be performed. We have designed a variety of fixtures for inspection, trimming, and assembly. The parts on these fixtures are usually held down by vacuum or clamps. Some fixtures come equipped to be mounted to a CNC machine table or free standing on their own portable cart.



Unique Design Applications

Throughout the years we have also gained experience in other design applications. Those have included designs for rubber molds, forming dies, and die cast



Value Added Capacity

Many times companies do not have the capacity on hand to provide the necessary services to their customers. Utilizing our broad base of experience can be value added capacity for your company. We can offer many services that may not be at your disposal in your own facilities. Services such as...

- Tooling Feasibility Studies
- Designs for Off Shore Tooling
- Checking Designs
- Additional Design Capacity
- Assistance with Part Designs
- Reverse Engineering



In Conclusion:

David Wolfe Design has the capacity, experience, and technology to handle your design requirements from the simplest to the most complex. Please feel free to contact us at any time to review your design needs.

Reach us on your
smart phone



Connect with us on



MADE IN USA

David Wolfe Design, Inc.
829 Moe Drive
Akron, Ohio 44310 USA

Phone: 330-633-6124
Fax: 330-633-9926

Email: info@davidwolfedesign.com
www.davidwolfedesign.com